

Denise Liboiron

Real Estate Sales Rep. REALTOR®
c21 All-Pro Realty (1993) Ltd.
The Gold Standard in Real Estate
deniseliboiron.com



OPEN HOUSE

November 2nd 1:00 PM - 3:00 PM

Estate by Lakefront



MLS®X577112 40328261



146 Keewatin Drive
Alnwick Twp, ON KoK2Go

Bedrooms:	6
Bathrooms:	3.5
Living Area:	5000+++sqft
Lot Size:	1.4 acres



Extreme, Showstopper Home. Estate Neighbourhood at Nawautin Sanctuary steps to Lakefront. Surrounded by stoic, old-growth Forest. Gorgeous Cape Cod Contemporary. Approx. 6BR 3.5 Bath



CENTURY 21

All-Pro Realty (1993) Ltd.

BROKERAGE

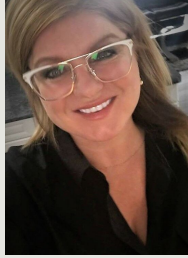


Denise Liboiron

SALES REPRESENTATIVE



Not intended to solicit properties currently listed for sale or buyers under contract. The trademarks REALTOR®, REALTORS® and the REALTOR® logo are controlled by The Canadian Real Estate Association (CREA) and identify real estate professionals who are members of CREA. Used under license. The trademarks MLS®, Multiple Listing Service® and the associated logos identify professional services rendered by REALTOR® members of CREA to effect the purchase, sale and lease of real estate as part of a cooperative selling system. Used under license. Independently Owned and Operated. ®/™ trademarks owned by Century 21 Real Estate LLC used under license or authorized sub-license. © 2022 Century 21 Canada Limited Partnership. ©2022 MoxiWorks.



📍 146 Keewatin Drive Alnwick Twp, ON K0K2G0

MLS® 40328261



\$2,985,000

View the details here:
www.c21.ca/listing/ON/Alnwick-Twp/146-Keewatin-Drive-K0K2G0/162106525

Bedrooms:	6
Bathrooms:	3.5
Living Area:	5000++ sqft
Lot Size:	1.4 acres



Incredible Home & Nature Lot

Extreme, Showstopper Home. Estate Locale at Nawautin Sanctuary steps to Lakefront. Surrounded by stoic, old-growth Forest. Gorgeous Cape Cod Contemporary. Approx. 6BR 3.5 Bath 5000 + 2000 Fin. LL alt. MLS®X5771128